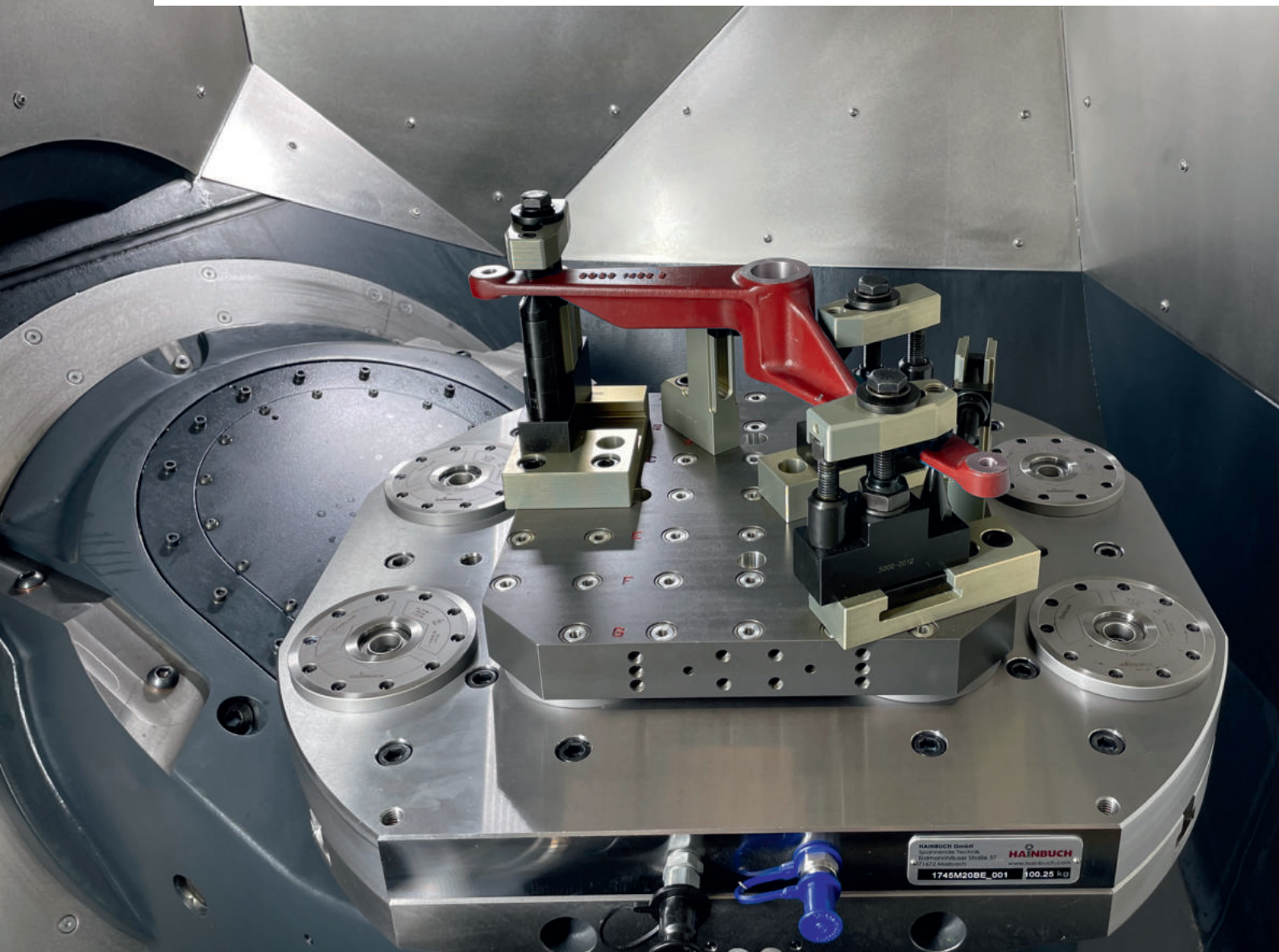


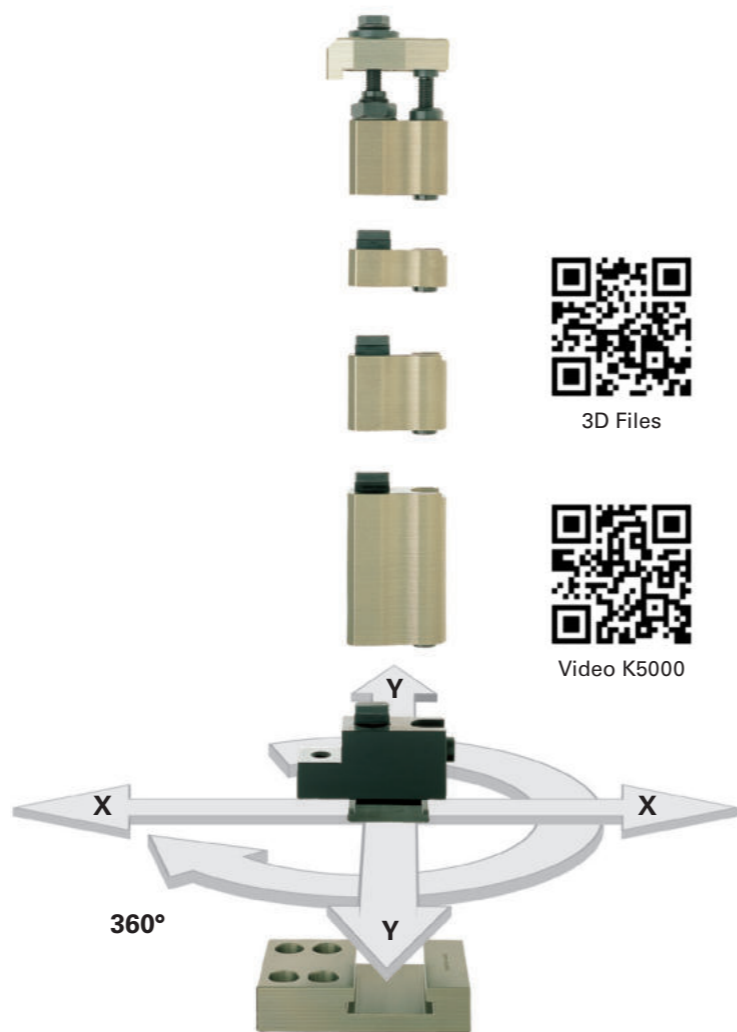
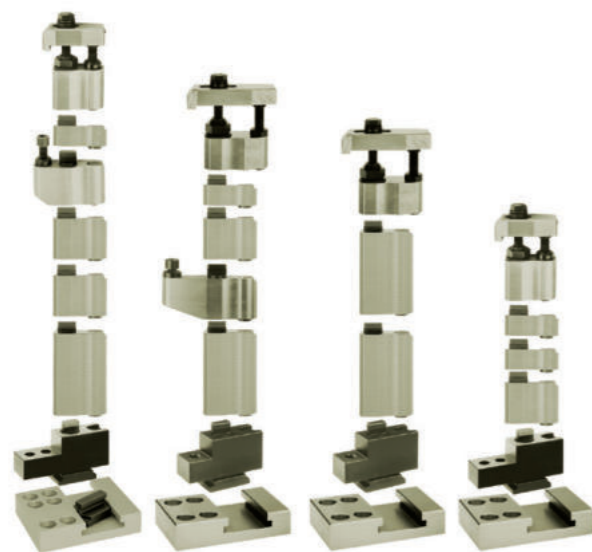
K5000 MODULAR CLAMPING SYSTEM



K5000 MODULAR CLAMPING

Module design

- Complete machining in one clamping set-up
- Continuously movable in X and Y axes
- 360° pivoting capability
- For locator grids and T-slot tables / pallets (also on DockLock zero-point clamping system)
- Replaces most custom-built fixtures
- Sizes (M8 – M20)



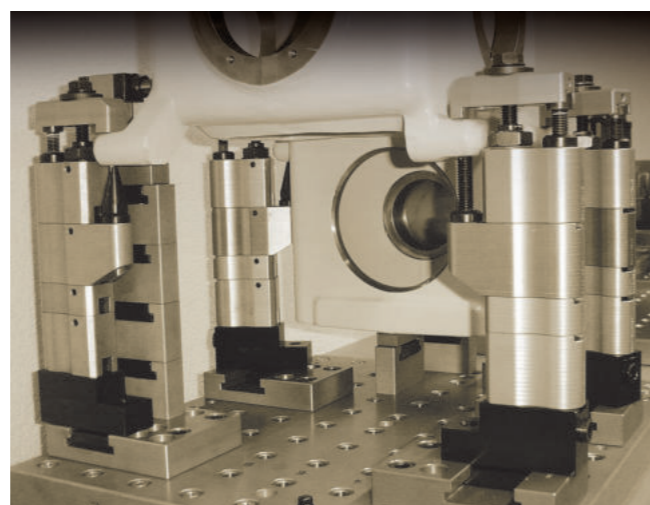
3D Files



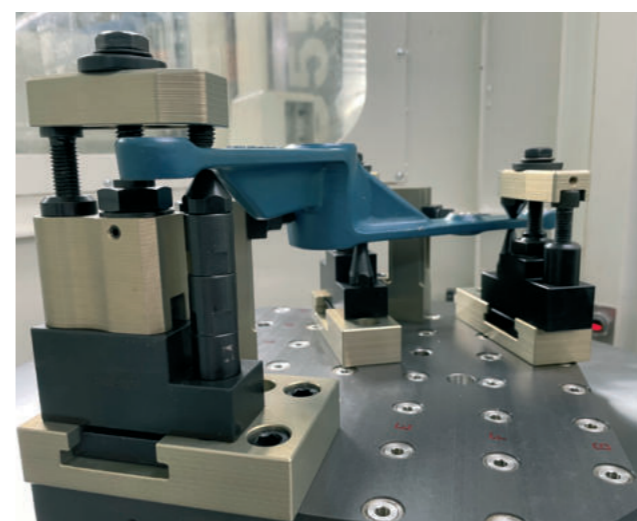
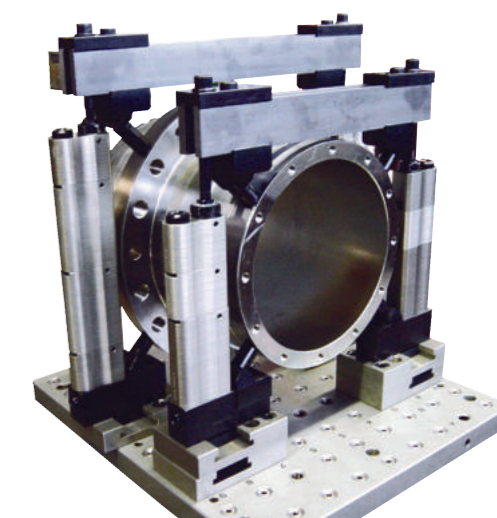
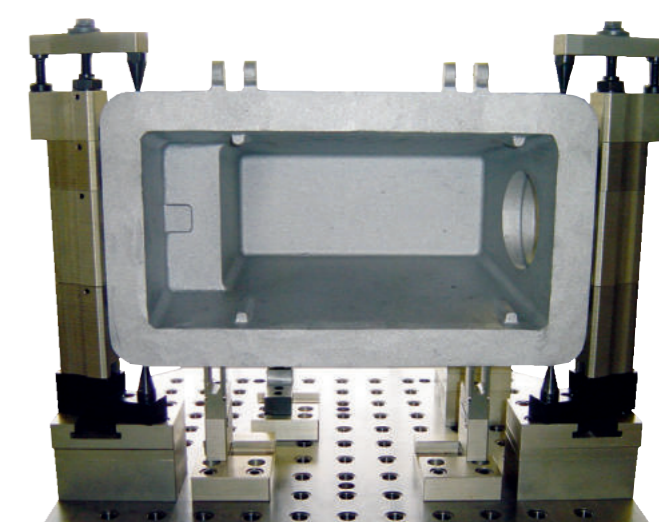
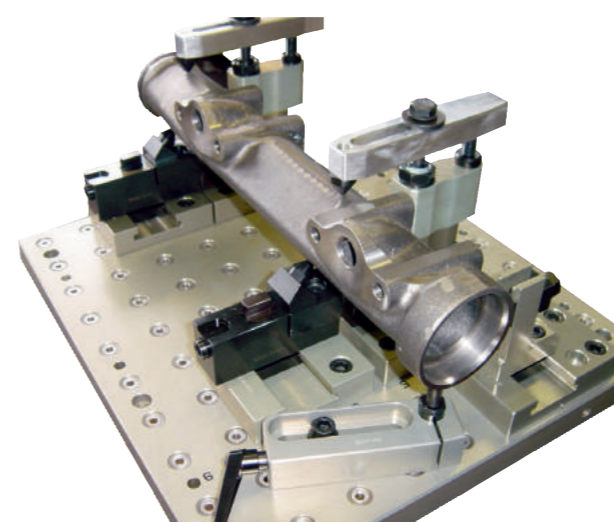
Video K5000

Complete machining in one clamping set-up

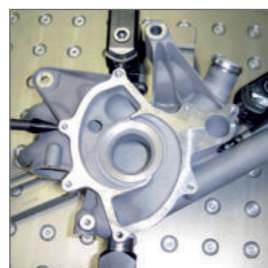
- For applications requiring a high level of flexibility
- For the design of fixtures with stringent clamping requirements
- Excellent for zero series, before the final custom fixture is constructed
- Ideal supplement to the K5001 line (clamping between columns), complete machining in just one clamping set-up
- Suitable for single components and large series, also for multiple clamping set-ups, manual or hydraulic versions



K5000 USER EXAMPLES

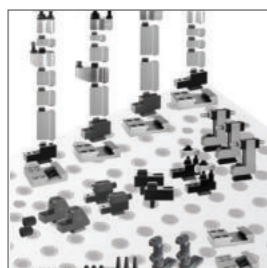


K5000 ADVANTAGES



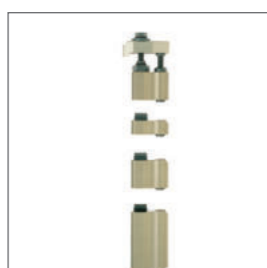
Perfect for irregular components

- Cast/forged parts
- Prototype production
- Fixture construction



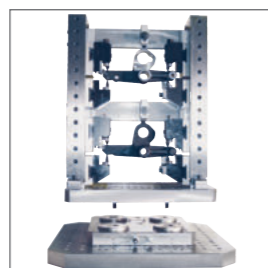
Wide product range

- Various modules
- Vertical and horizontal clamping modules
- 4 Sizes (M8 – M20)



Modular design

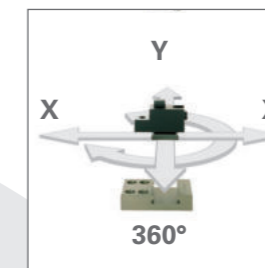
- Many standardized elements
- Building block principle
- Limitless varieties



Manual quick change

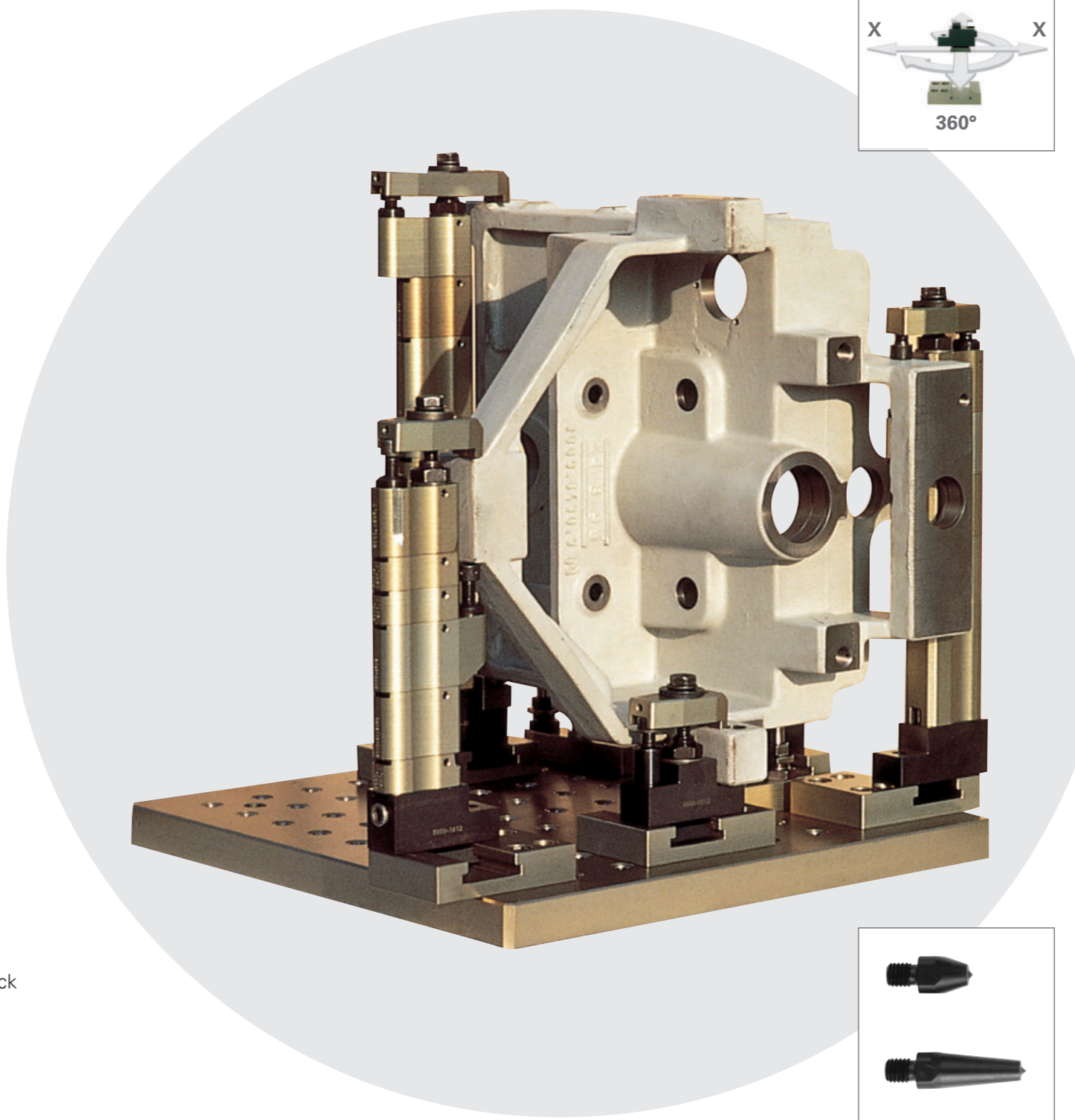
- In combination with DockLock

K5000 ADVANTAGES



Highly flexible instead of custom fixture construction

- Continuously adjustable
- Every point accessible
- For locator grids



No distortions in table and component

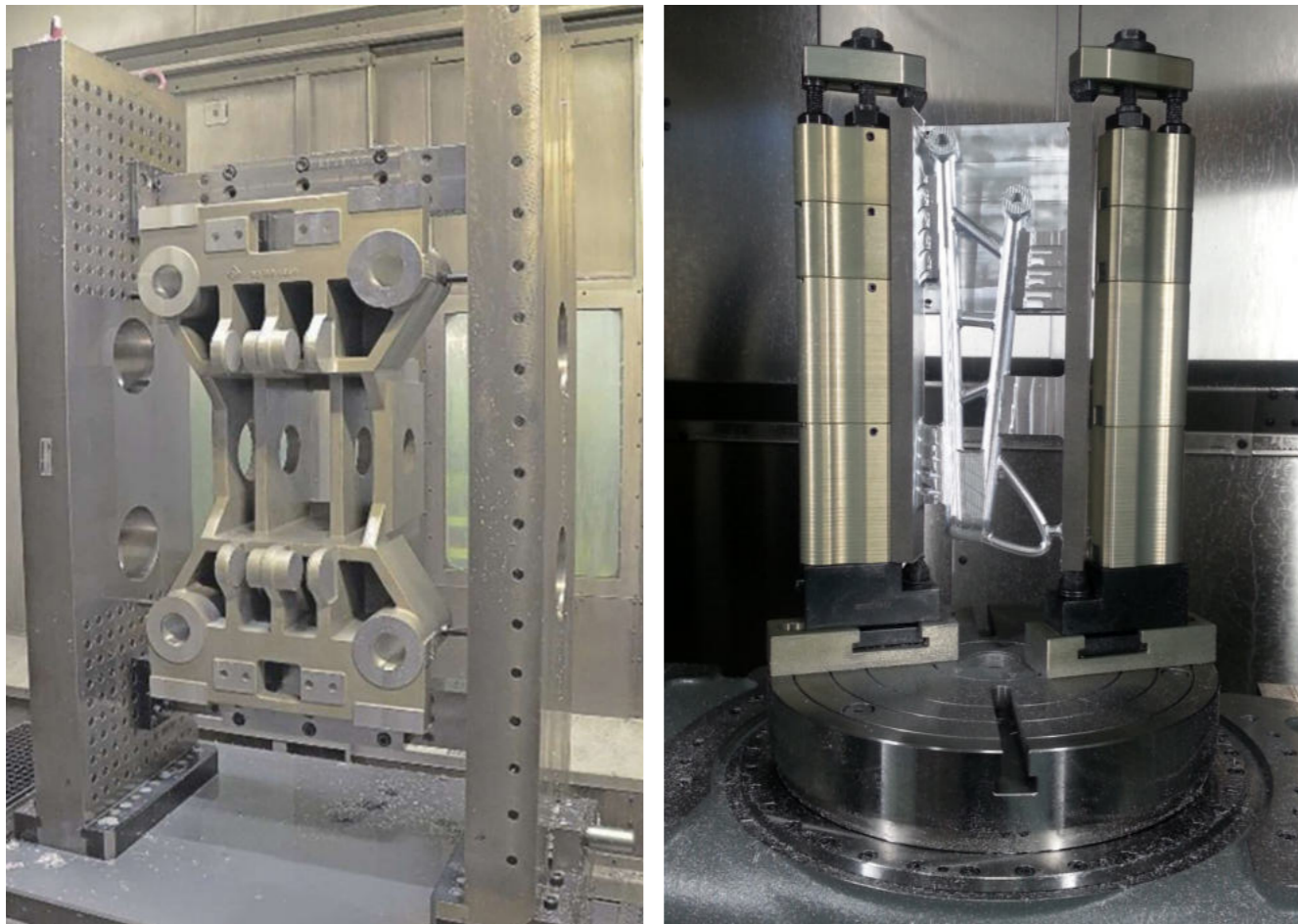
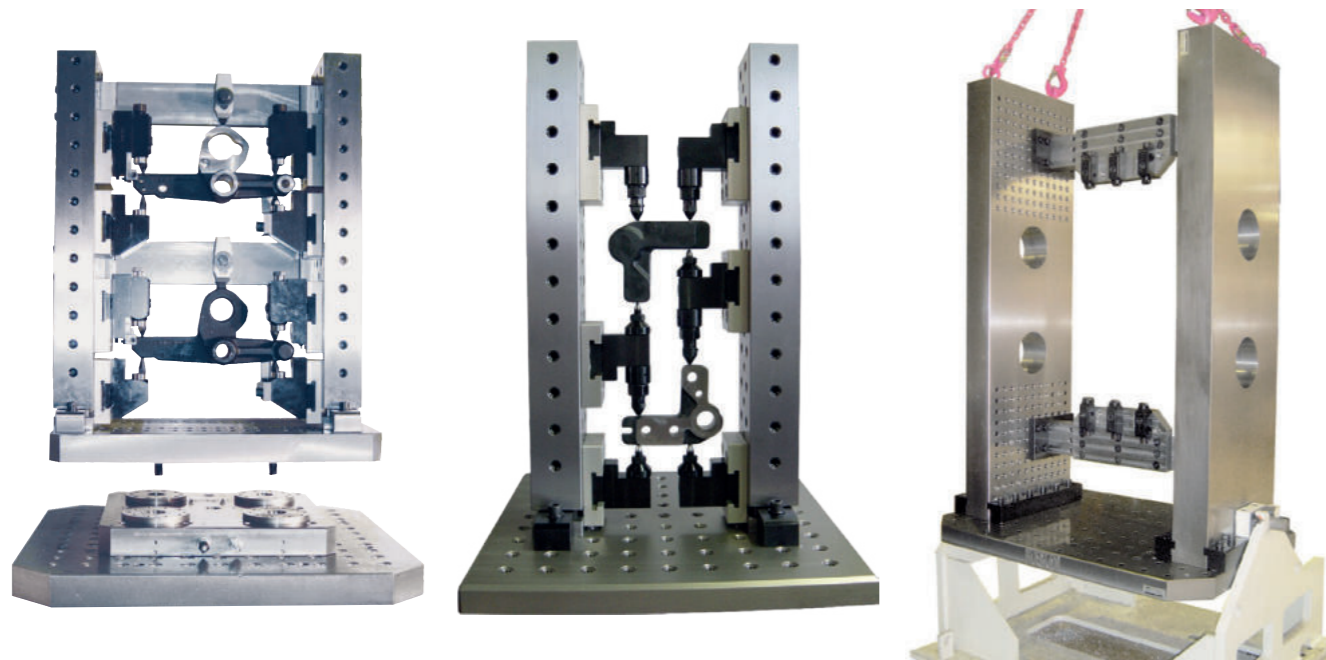
- Force loop ensures canceling of opposing forces
- 3-point clamping



Secure form fit with optimal accessibility

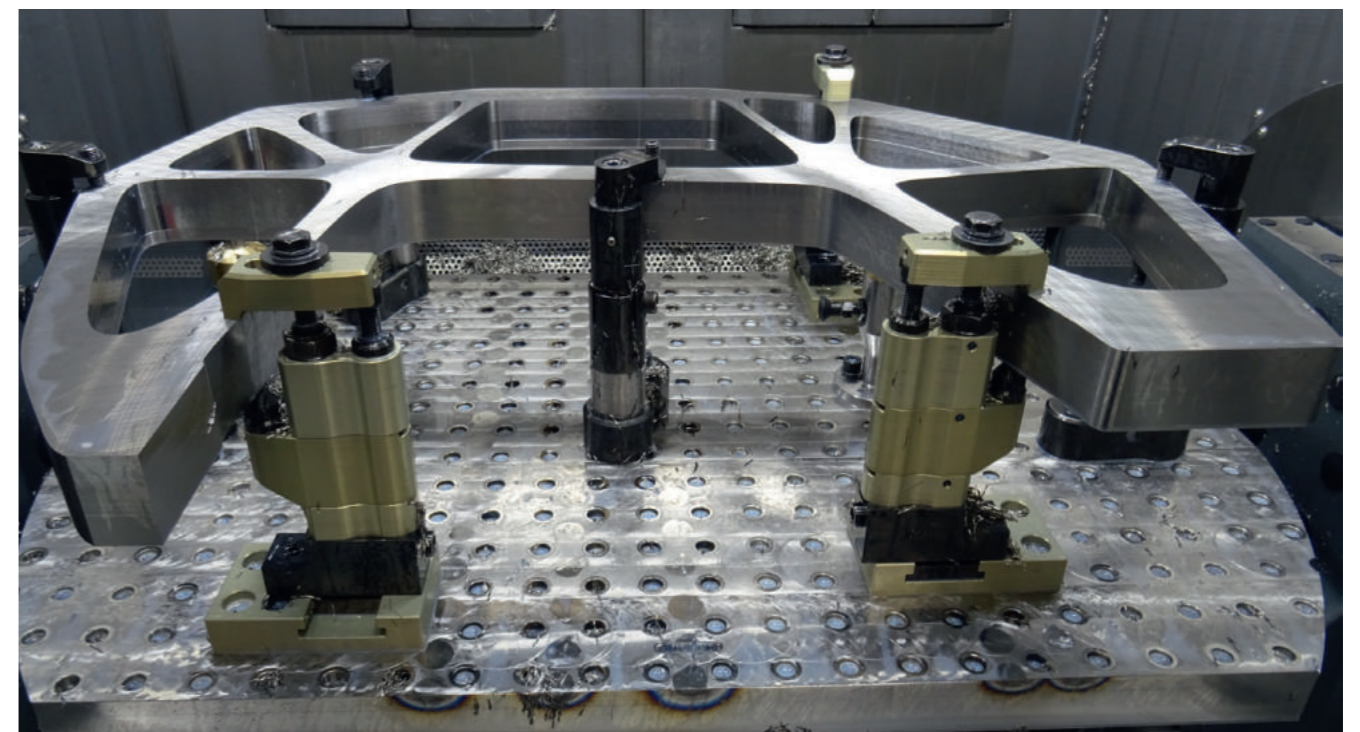
- Effective clamping between centers
- Complete machining in one clamping set-up

K5000 FRAME CLAMPING

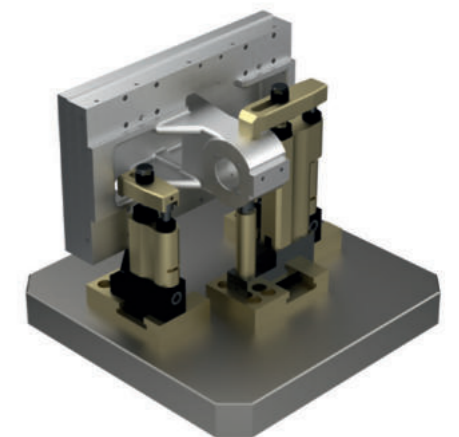
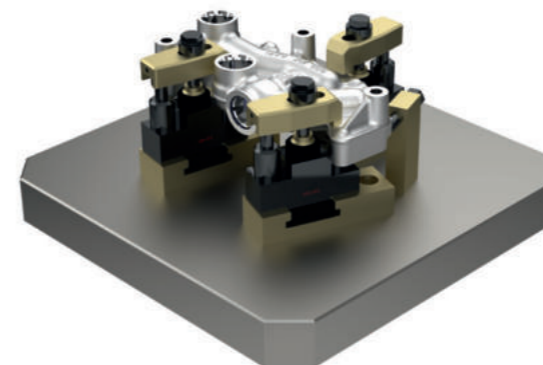
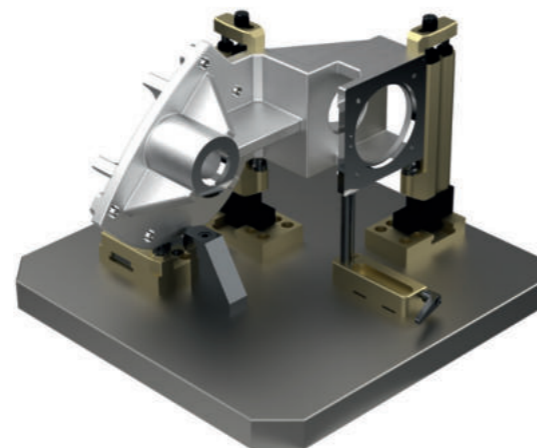
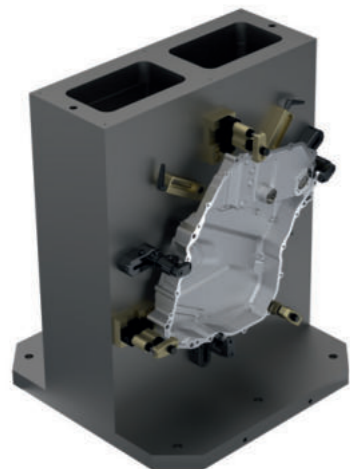
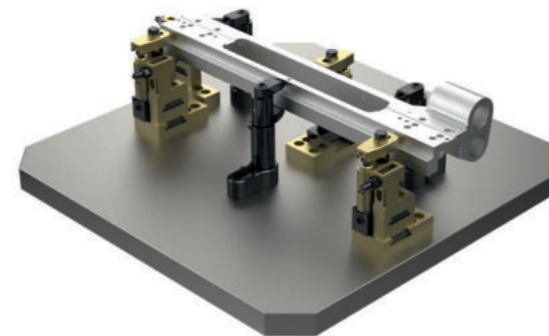
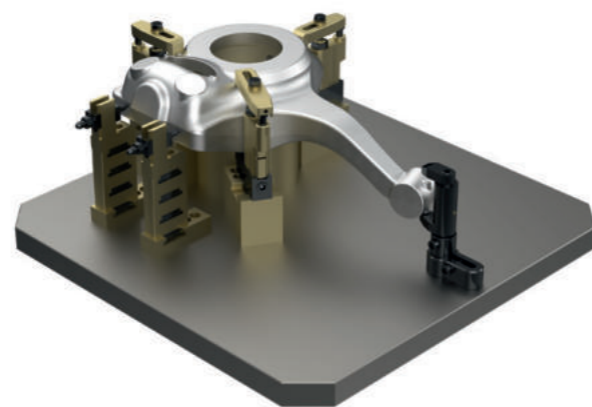
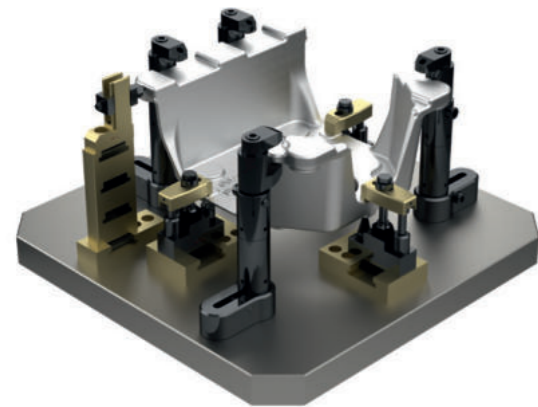
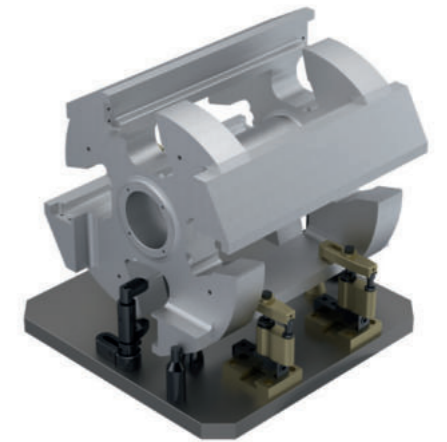
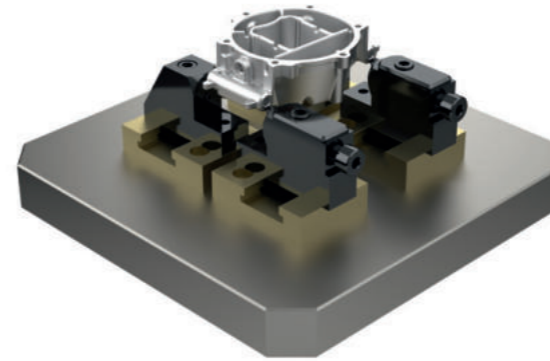
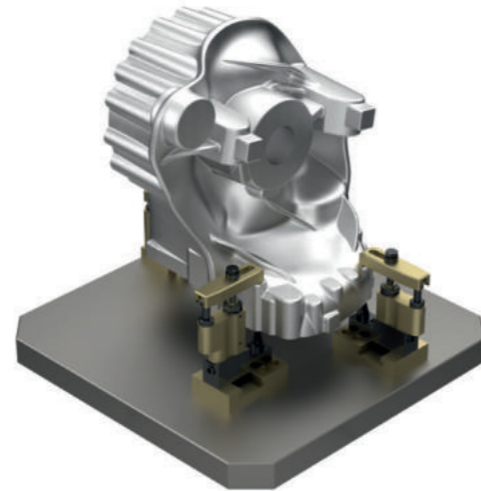
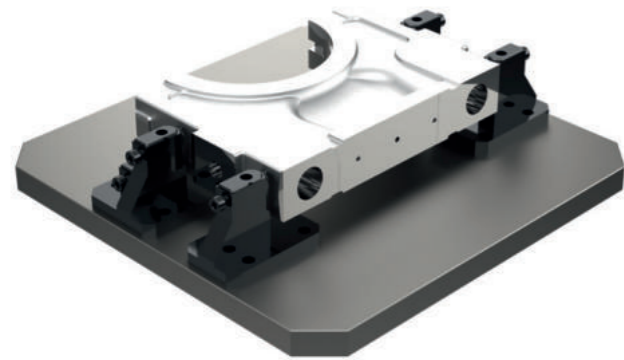


K5000 COMPENSATING CLAMPING

No distortion at 4th clamping point



K5000
3D PLANNING EXAMPLES

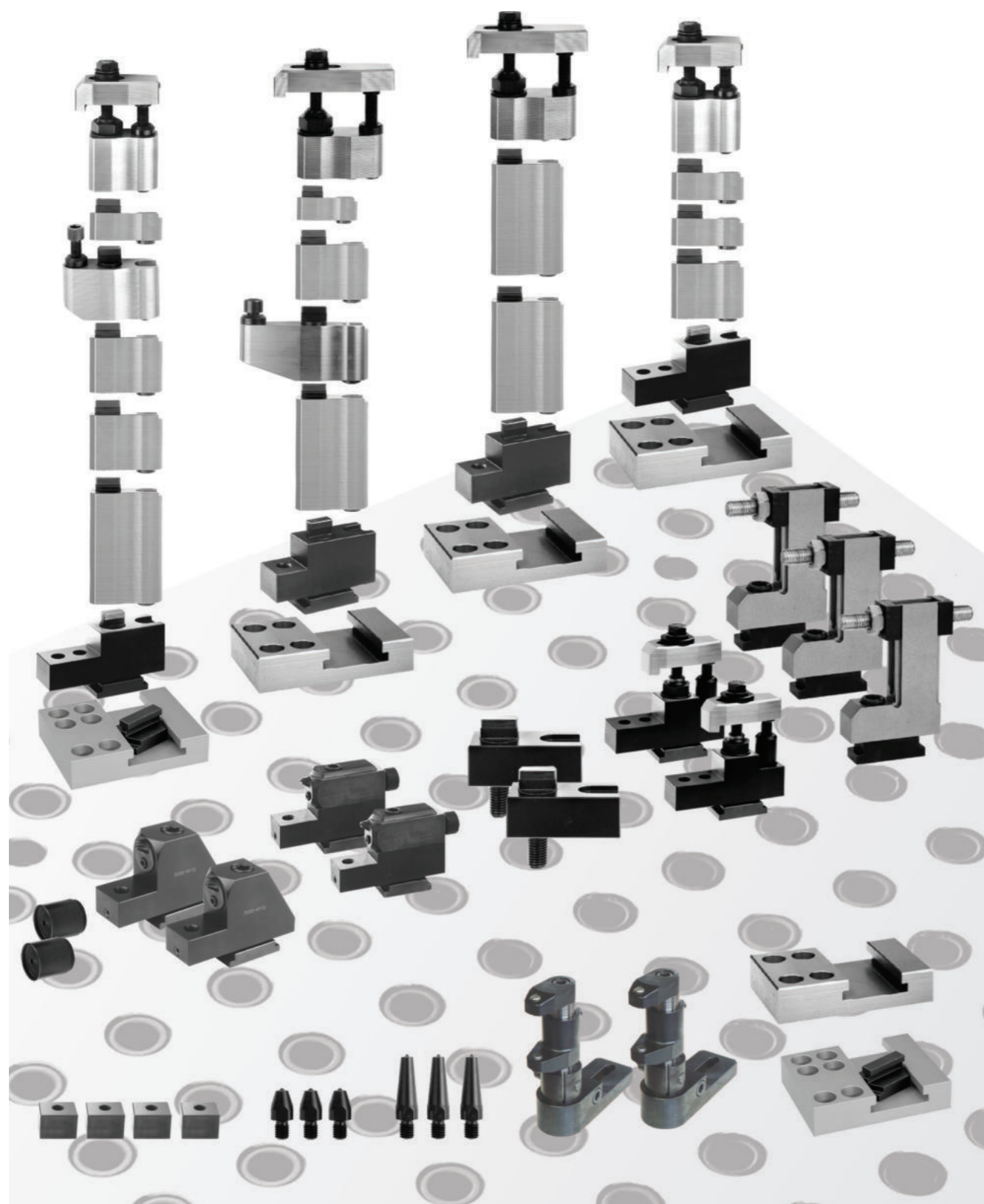


3D Files



3D Files

K5000 STARTER KIT

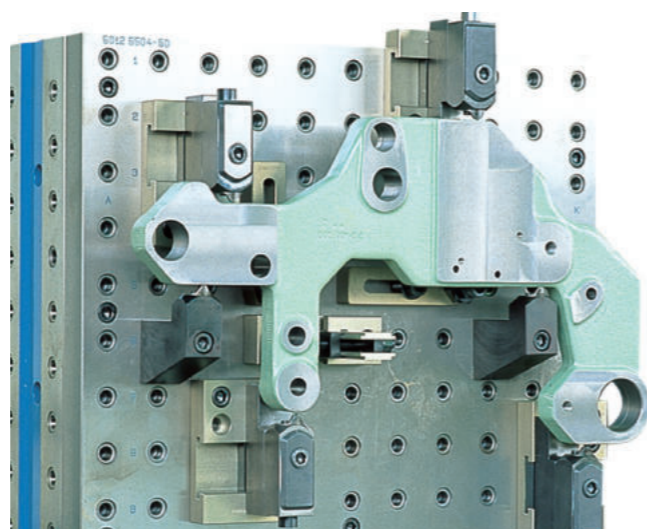
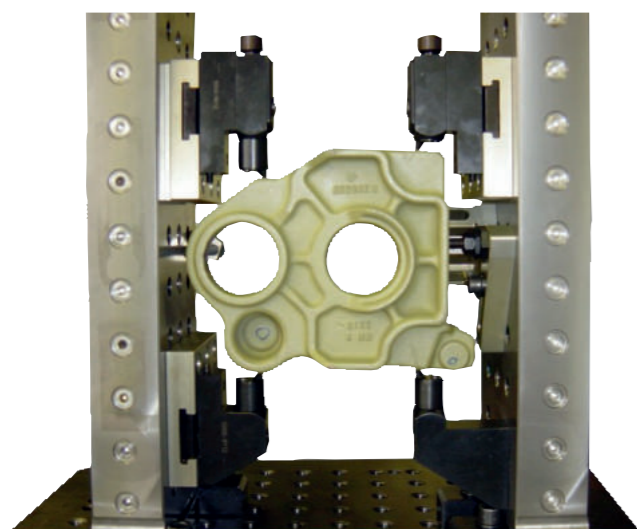


K5000 STARTER KIT

		Art. no.			Grid
		5000-VB-SET M12 (starter kit)			40/M12
		Components			
A		12 5000-9012	Lateral clamp	2 pcs.	
B		11 5000-7012	End-stop, adjustable	3 pcs.	
C		10 5000-2012	Clamping unit, form A	2 pcs.	
		9 5000-2512	Clamping unit, extended form A	2 pcs.	
		8 5000-3512 (L97 mm)	Intermediate supports	1 pc.	
D		8 5000-3612 (L144 mm)	Intermediate supports	1 pc.	
		7 5000-3012025 (H25 mm)	Height blocks	4 pcs.	
		7 5000-3012050 (H50 mm)	Height blocks	4 pcs.	
		7 5000-3012100 (H100 mm)	Height blocks	4 pcs.	
E		6 5000-1012	Base elements, modular movable in X and Y by 50 mm	2 pcs.	
		5 5000-1112	Base element, modular, long movable in X and Y by 50 mm	2 pcs.	
12		4 5000-1712025	Base element	2 pcs.	
		3 5000-0112	Clamping element, mono, long movable in X and Y by 50 mm	2 pcs.	
11		2 5000-4012075	Base plate	4 pcs.	
		1 5000-4212	Base plates with T-slot nut, 360° pivoting	2 pcs.	
		Accessories			
		A 5000-8012	Soft supports	4 pcs.	
		B 5000-8512125	Clamping centers, short	3 pcs. each	
		B 5000-8812125	Clamping centers, long	3 pcs. each	
		C 5000-9012028	Extension for lateral clamp	2 pcs.	
		D 5000-2712030	Compensating clamp	2 pcs.	
		E 5000-9112	Counter fixture, adjustable	2 pcs.	
		5000-VB-SET M16 (starter kit)			50/M16
		Components			
		12 5000-9016	Lateral clamp	2 pcs.	
		11 5000-7016	End-stop, adjustable	3 pcs.	
		10 5000-2016	Clamping unit, form A	2 pcs.	
		9 5000-2516	Clamping unit, extended form A	2 pcs.	
		8 5000-3516 (L119 mm)	Intermediate supports	1 pc.	
		8 5000-3616 (L144 mm)	Intermediate supports	1 pc.	
		7 5000-3016025 (H25 mm)	Height blocks	4 pcs.	
		7 5000-3016050 (H50 mm)	Height blocks	4 pcs.	
		7 5000-3016100 (H100 mm)	Height blocks	4 pcs.	
		6 5000-1016	Base elements, modular movable in X and Y by 50 mm	2 pcs.	
		5 5000-1116	Base element, modular, long movable in X and Y by 50 mm	2 pcs.	
		4 5000-1716030	Base element	2 pcs.	
		3 5000-0116	Clamping element, mono, long movable in X and Y by 50 mm	2 pcs.	
		2 5000-4016095	Base plate	4 pcs.	
		1 5000-4216	Base plates with T-slot nut, 360° pivoting	2 pcs.	
		Accessories			
		A 5000-8016	Soft supports	4 pcs.	
		B 5000-8516125	Clamping centers, short	3 pcs. each	
		B 5000-8816125	Clamping centers, long	3 pcs. each	
		C 5000-9016036	Extension for lateral clamp	2 pcs.	
		D 5000-2716050	Compensating clamp	2 pcs.	
		E 5000-9116	Counter fixture, adjustable	2 pcs.	

K5000 LATERAL CLAMPING

- Continuously adjustable in grid (X-Y)
- Form fit center clamping
- Clamping force up to 25 KN



Art. no.	Grid
5000-9012 Set M12	40 / M12
Contents:	
5000-4012075 Base plate	4 pcs.
5000-9112 Counter fixture	2 pcs.
5000-9012 Lateral clamp	2 pcs.

Art. no.	Grid
5000-9016 Set M16	50 / M16
Contents:	
5000-4016095 Base plate	4 pcs.
5000-9116 Counter fixture	2 pcs.
5000-9016 Lateral clamp	2 pcs.



Base plate

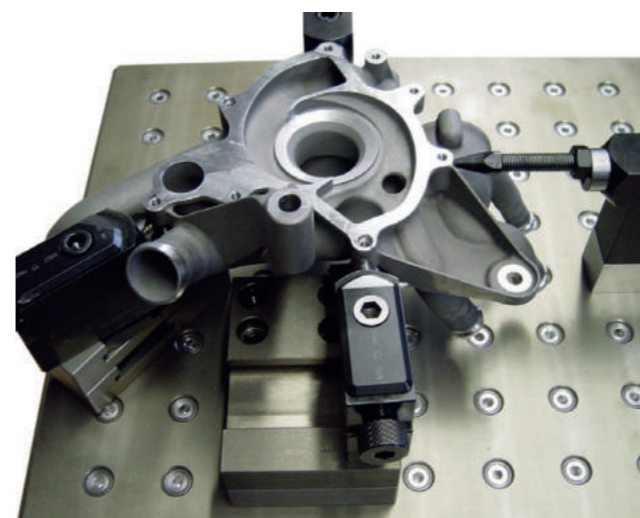
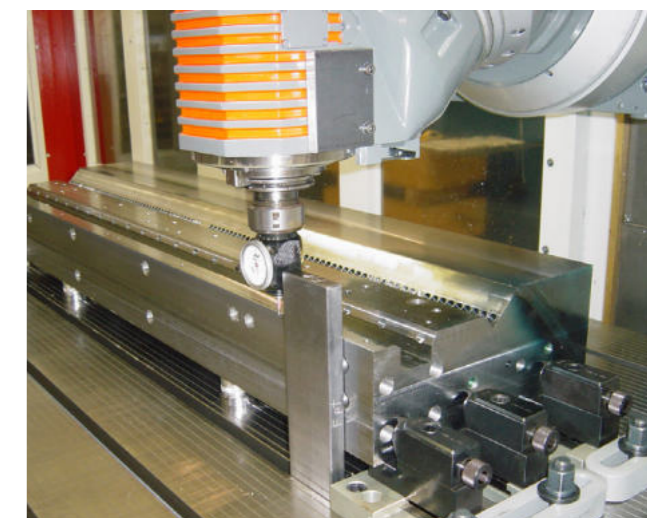
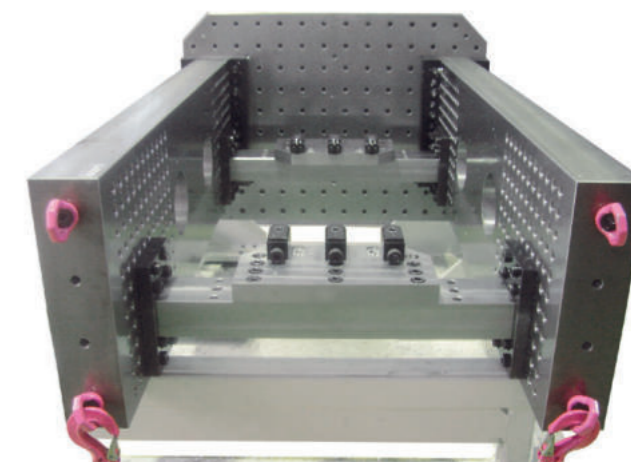
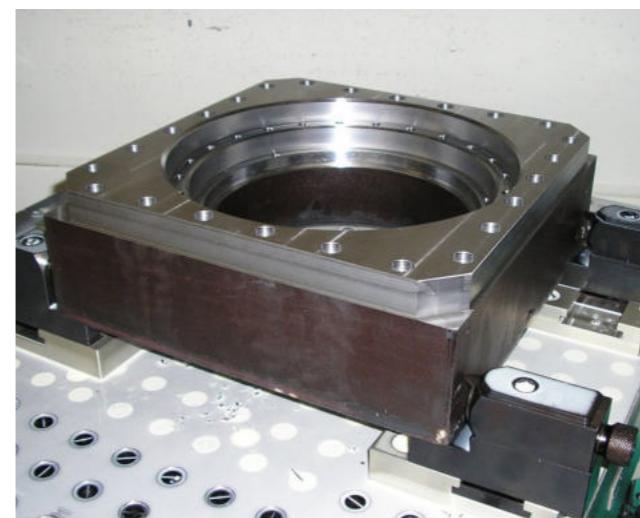


Lateral clamp



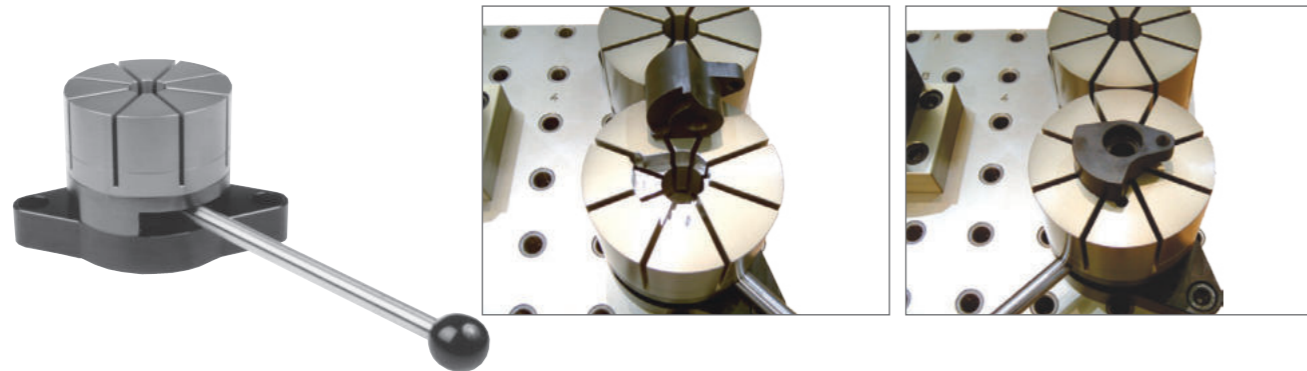
Counter fixture adjustable

K5000 USER EXAMPLES

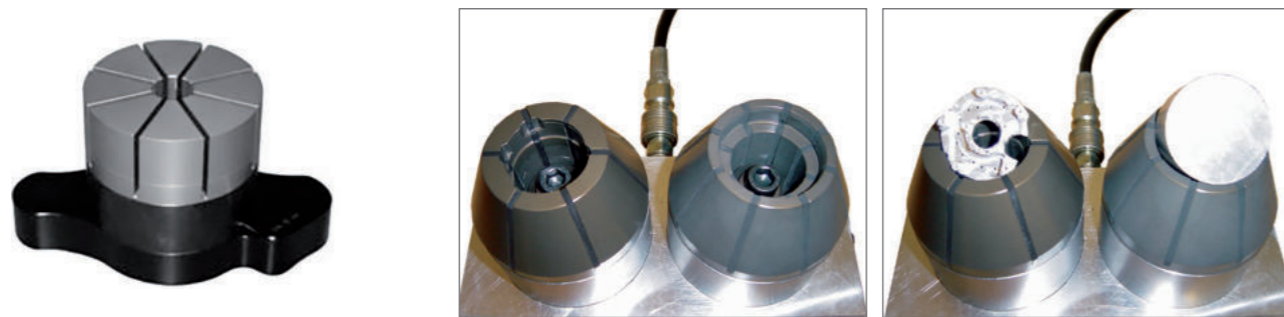


**K5000
COLLET CLAMPING**

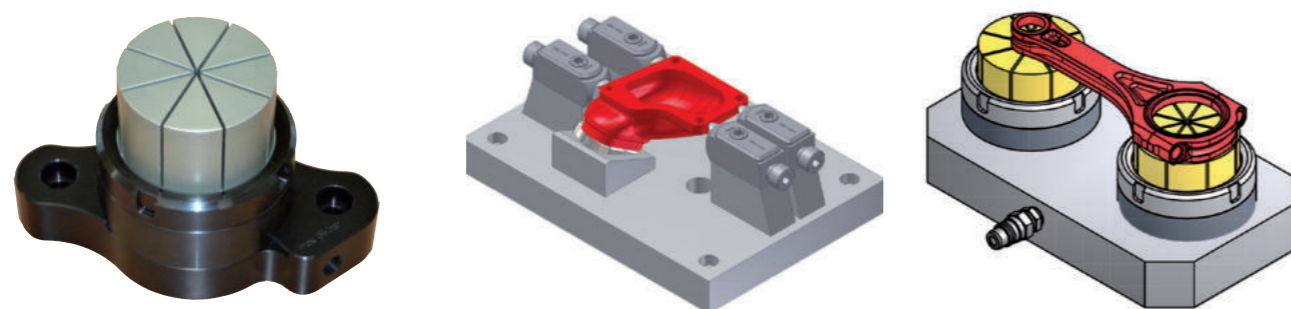
Mechanic collet unit with mounted O.D. collet



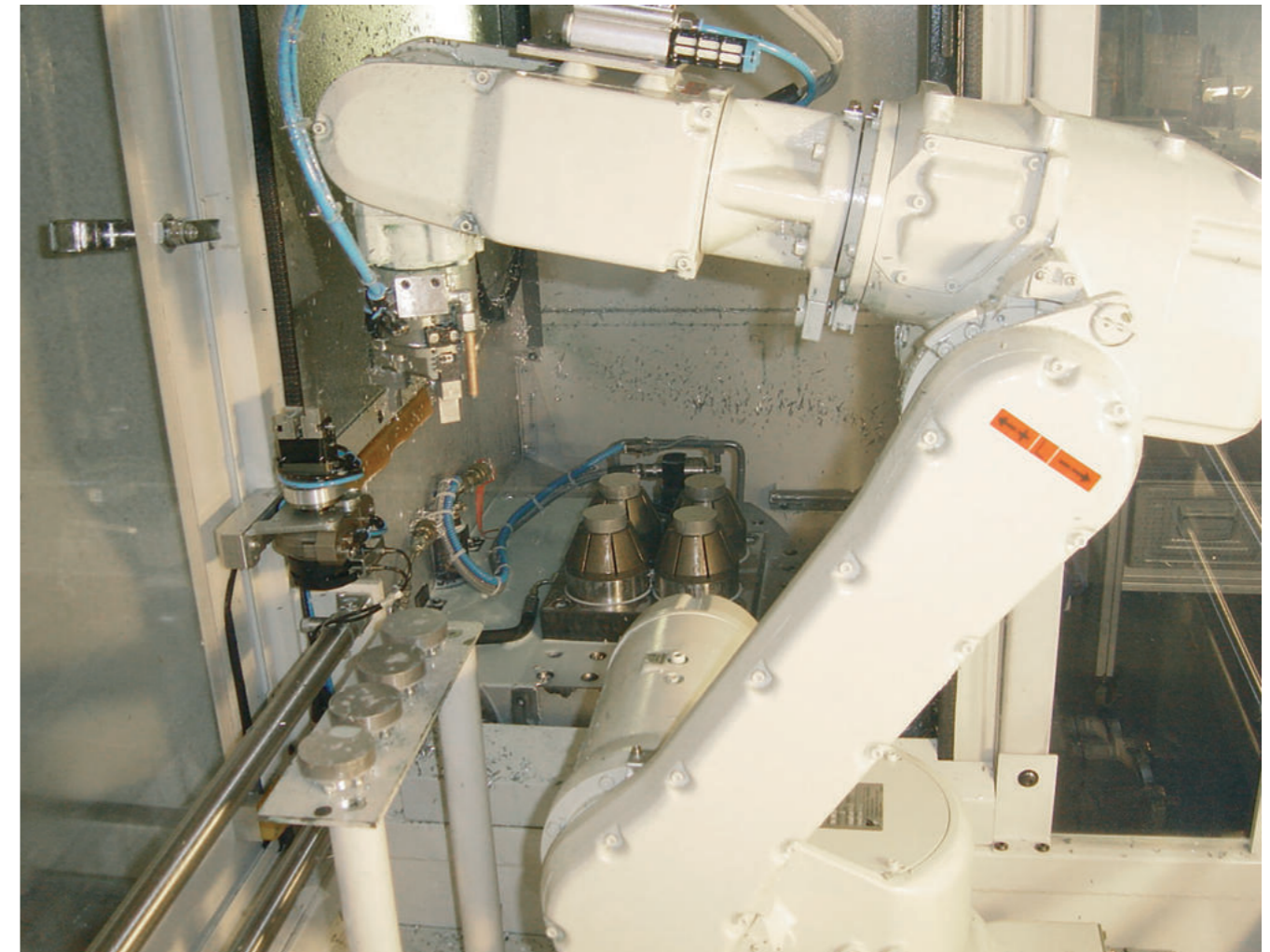
Hydraulic collet unit with mounted O.D. collet



Hydraulic collet unit with mounted I.D. collet

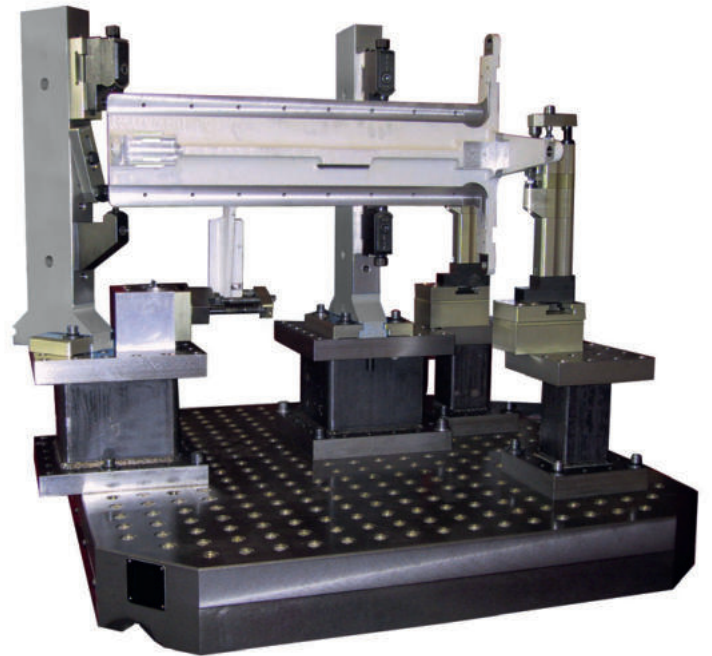
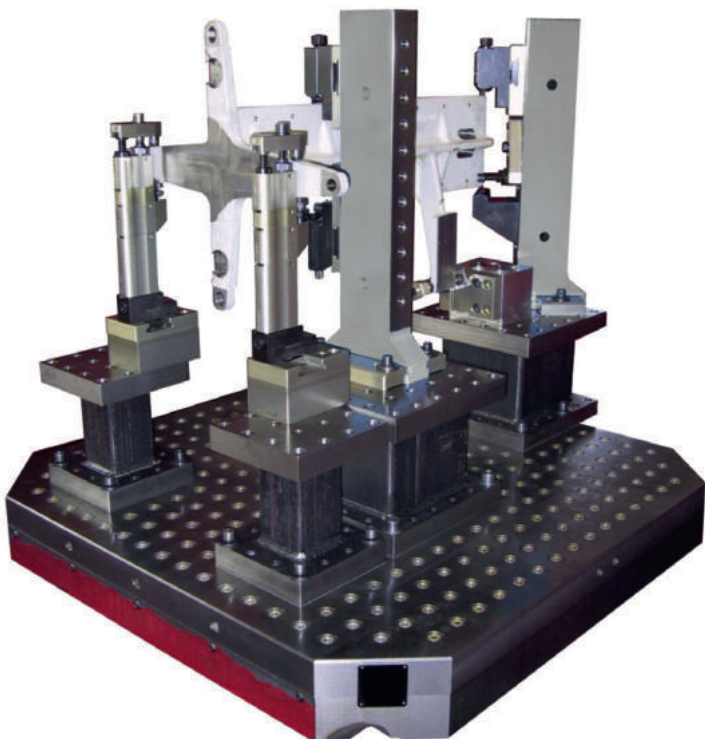


**K5000 HYDRAULIC COLLET
USER EXAMPLE**





► Further clamping solutions and details can be found in the VBA Workholding Book VOL. 1



Vischer & Bolli
Automation GmbH
E-Mail: verkauf@vb-automation.com
www.vb-automation.com